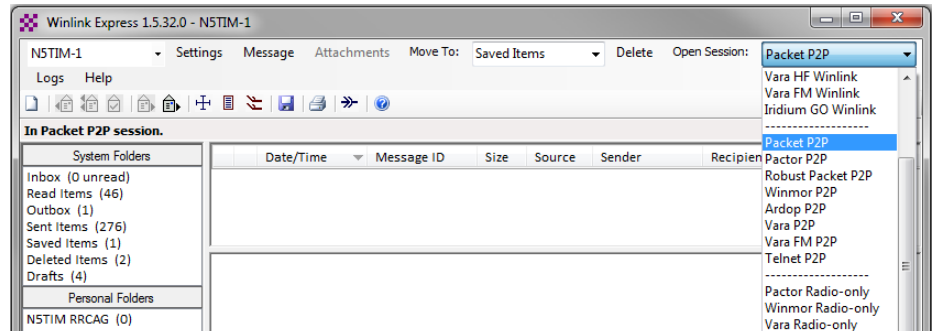


Winlink Packet Peer to Peer Messaging Reference Sheet

A peer-to-peer connection is a connection directly to another Winlink Express or other non-server client. This mode requires the called station to be listening on the same frequency as the calling station. Both stations need to be in the same Peer-to-peer mode. Either station once connected can make a file transfer.

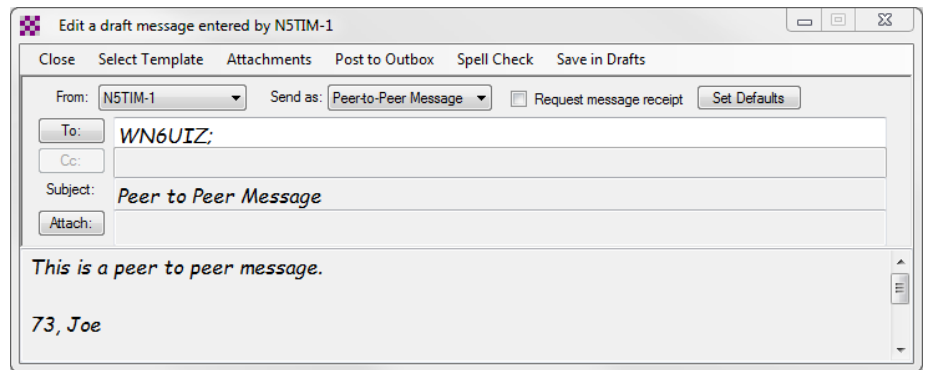
1. From the main Winlink Express window select **Packet P2P** or your preferred P2P mode from the Session drop down.

There are a number of modes that Peer-to-Peer can be used with.



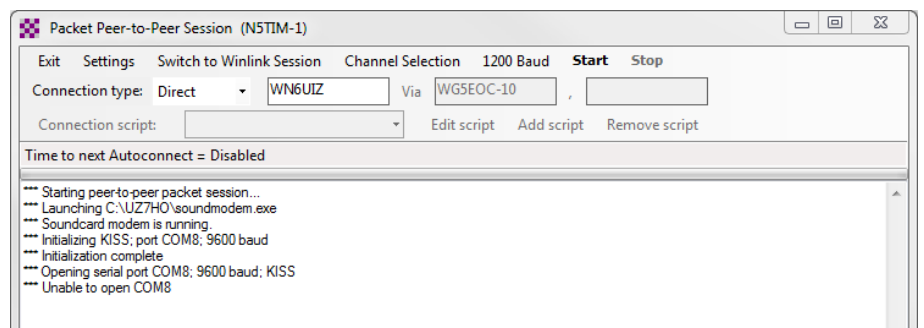
2. Select new message and from the *Send as* dropdown and select the **Peer-to-Peer Message**.

Note: The **Send as** dropdown reverts to Winlink Message after a **Post to Outbox**.



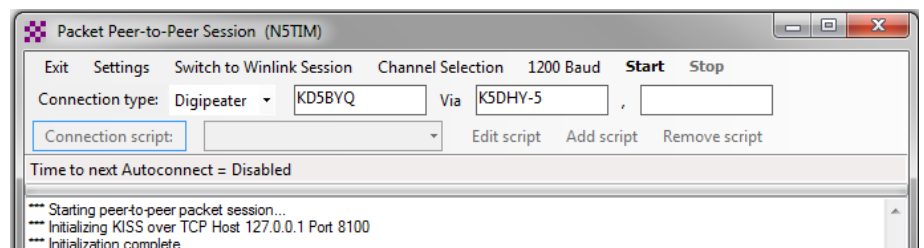
3. Then create your message. Enter the call of the station you want to send the P2P message to. After you finish the message click on **Post to Outbox**.

4. In the session window make sure **Packet Peer-to-Peer Session** is shown at the top of the window. Enter the call sign of the station you want to connect to and set it for Direct.



Click **Start** to send you message.

Note: Only base call signs are allowed, no tactical calls.



Digipeating

5. A Digi may be used to

connect Peer-to-Peer stations that are not able to connect directly. Select **Digipeater** for Connection Type and enter the Digi call sign in the **via** box. Select **Start** to send message.